

EXPERTISE . QUALITY . RELIABILITY



BPS CAMBODIA CO., LTD.

#25A, Street 618, Sangkat Boeung Kak II,
Khan Tuol Kok, Phnom Penh, Cambodia

Tel: 855-23 880 485

HP: 855-12 371 555/016 982 555

Fax: 855-23 880 485

Email: sales@bpscambodia.com
Website: www.bpscambodia.com

EXPERTISE . QUALITY . RELIABILITY

Cleaning and Pest Control Services



	page
Company Profile	3
Cleaning Service	5
Pest Control Service	7

a clean home - a clean world



a clean home - a clean world

www.bpsccambodia.com

Drilling Method



- 1- Make holes with 2 cm diameter, 50 cm interval between holes
- 2- 15 cm from the exterior walls will be drilled through concrete floor slabs or aprons, minimum 40 cm deep so as to reach the soil.
- 3- Inject Termiticide (Prothor or Premise) in all holes at 15-30 psi pressure and a minimum quantity of 5 litres of termiticide solution per hole.
- 4- Holes will be filled with cement and sand mixed in putty consistency.
- 5- The cap will be plugged at the same shape

WARRANTY!

A five (5) years Warranty Certificate will be issued for free-post treatment with the use of termiticidal dust in the unlikely event of subterranean termite attack in the premises.

Soil Treatment or Pre-Construction

Termite Proofing, offers the best protection against termite intrusion as the chemical barrier is spray evenly onto the soil before the solid concrete is pour over it. Thus creating a barrier, underneath the solid concrete.

Maxxthor – A US product will be introduced to protect your premise.

WARRANTY!

Option of a five (5) years up to ten(10) Warranty Certificate will be issued based on the dilution of active ingredient.



INTRODUCTION TO BPS

With hundreds of clients in Phnom Penh, BPS is one of the most successful privately owned commercial cleaning and pest control companies in Cambodia.

Since inception in early 2008, we have grown a considerably large work force servicing more than hundreds of customers in various industry, NGO, Government, Banking, Telecom and other private sector.

In every aspect of our business, we strive to earn and keep the trust our clients give us when they choose BPS as their cleaning and pest control service provider.

COMPANY PROFILE

Our Vision

BPS's vision is to be the 'first choice for environmentally responsible, service effectiveness, service satisfaction, professional staffs, and long-term cleaning and pest solution'.

Our Mission Statement

- To achieve a reputation in the market place for OUTSTANDING SERVICE delivery.
- To allow our customers to be the judge of the quality of service provided.
- To encourage close and lasting relationships with our customers therefore building their trust and confidence.... "Customers for life".
- To produce acceptable profits as a consequence of maintaining client satisfaction and the quality of our product-partnership.
- To set high standards and provide an environment that is conducive to attracting and retaining highly motivated, well-trained, loyal employees, which is the foundation for a healthy and successful organization.
- To constantly seek ways to innovate, improve and lead in our field of Endeavour.

WHY BPS?

The face of our business - **People**

Well trained, well presented, competent and qualified - a knowledgeable, skilled professional who is able, trustworthy, responsible and equipped to perform... Our people are our greatest asset. Our cleaning and pest control supervisor has more than 10 years experience in this industry.



BPS BUSINESS PARTNER

Cleaning Products

- AIM: Johnson Diversey Product
- Chemex Cambodia: Product of Malaysia
- Weltex HealthCare: Product of Thailand

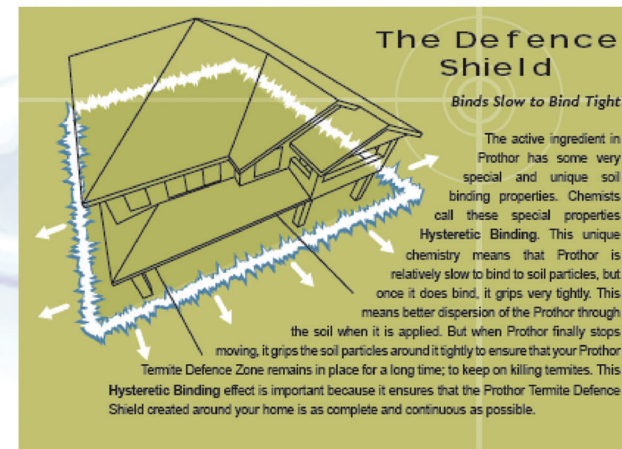
Pest Control Products

- We are an authorized operator of Exsystex Company, a US Based company. Exsystex has a background of over 75 years in pest management and a global team of dedicated pest management professionals. www.exsystex.com.au
- Weltex HealthCare: Product of Thailand

Corrective Soil Treatment – Post Construction

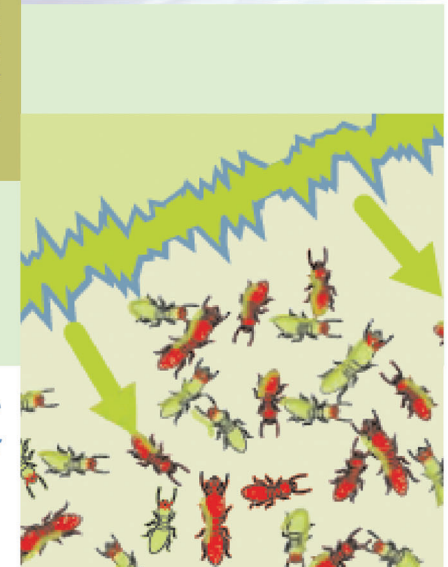
- Your building was already built and got attacked by termite..?
- Or
- Your building was already built and you want to protect from termite attack..?

The method for controlling subterranean termites that have invaded or protect a building is to inject enough residual liquid termiticide (Prothor/Premise) formulation into the soil immediately surrounding and underlying the foundation and footing of the building to create a toxic chemical barrier to the termites.



Prothor Barrier to Protect the Building

Termites dying outside of Prothor Barrier



How EXTERRA Works

1- In Ground Station

The first step of using Exterra is to install In-ground Stations around the building at points near where termites are likely to be foraging in the ground for food. The Stations contain non-toxic food made of a timber termites prefer to eat.



....In Concrete Station

And if the building is surrounded by concrete, then the special Exterra In-concrete Station may be used. This has a stainless steel cap that seals flush with the pathway.



2. Above Ground Station

Above-ground Stations are the preferred approach when termites are already in your home. Bait is placed in the safe and sealed Station when it is installed. Above-ground Stations speed up the process of colony elimination. After the termite colony is eliminated, the Above ground Stations are removed.



5. Termites can't resist Requiem which leads to the colony's quick demise.

The termites feed on the Requiem and take it back to the colony where it is fed slowly throughout the entire colony. Since the termites die gradually, they do not associate the colony's demise with the consumption of Requiem. This ensures that the entire colony is eliminated.

3. Termites have been intercepted...

Termites are easily detected in the Exterra Stations. The unique (patented) design of the Exterra Station allows for termites to be seen without disturbing them. This is very important. And the termites are not disturbed during bait application either.

4. ...So it's time to put Requiem to work.

Requiem Bait is added and readily consumed in preference to timber.

Once termites start feeding on Requiem they stop feeding on the timbers in your home! Requiem is also non-toxic to you and your pets.



CLEANING SERVICE

Contract Daily Standby Cleaning Services

Day to day maintenance cleaning services of:

- Offices and Apartments
- Hospitals
- Industrial Premises
- Schools
- Banking
- Nursing Homes
- Government
- Shopping Center
- Telecom
- Other



Once-Off Specialized Cleaning

Once-off or more periodic cleaning services, including:

- Pre-occupation cleans
- Stripping and sealing of various floor surfaces, vinyl, marble...
- Preparation and restoration of floor surfaces
- Carpet shampooing
- Building exterior cleaning
- High level cleaning of girders, pipes and factory fittings
- Window cleaning
- High Pressure cleaning
- Flood or fire damage
- Spring clean offices, factories, houses, etc.



Garden Services

Regular and once-off maintenance of gardens and grounds.

- Grass cutting and maintenance
- Fertilization
- Flower beds and plant maintenance
- Trimming edges
- Maintaining sloped areas/banks
- Collection and removal of garden refuse
- Landscaping
- Landscape Lighting
- Instant Lawn
- Supply of plants, shrubs, etc.



Termite Control

Termite Baiting System - EXTERRA™

www.exterra.com.au

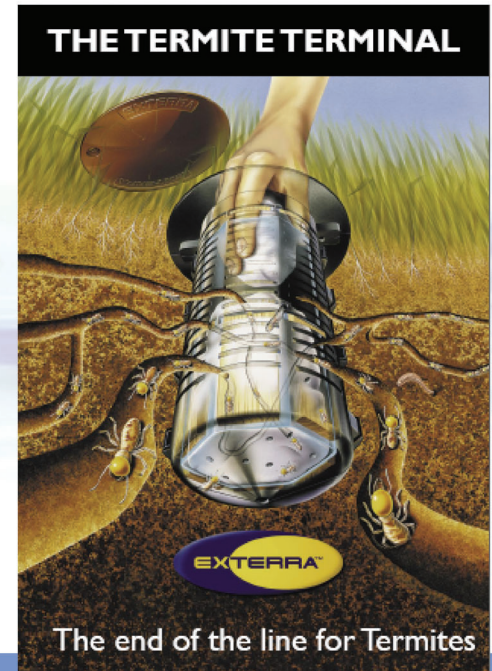
We are an EXTERRA Authorized Operator

Science in Action™

EXTERRA is:
The World's Most Effective Termite Baiting System

Designed to attract and eliminate termite colonies in a safe non invasive way.

It uses an insect growth regulator(IGR), Chlorfluazuron, as the active constituent in the Termite Bait. Active termites feed on the highly attractive bait food source & translocate the IGR to other members of the colony, at levels undetectable by those termites, until the colony collapses.



Why Exterra is the only choice to protect your biggest investment...

- Larger Station intercepts termites better
- Quality controlled system and operators
- Safe for you, your pets and the environment
- Eliminates the Termite Colony
- Most palatable and effective termite bait

Whilst termites can pass between the stations used by other systems, this does not occur with EXTERRA





Rodent Control

Besides feeding and contaminating the food that we eat, rats also carry fleas and mites that spread diseases such as plague, leptospirosis (rat urine disease), rat-bite fever, and salmonellosis (rodent faecal contamination of food or water). Rodents or rats are also known to bite and can cause hurt to young children or bedridden individuals. And this gnawing habit can damage floor and ceiling boards, wires, and wooden furniture.

Rats like to live in nests and these can be found in the ground, drains, burrows, rubbish dumps, and also indoors in upper dwellings or floor voids. Effective rat control methods include the application of rat poison or rodenticides, rat trap, rodent proofing, rat glue board and rodent exclusion methods.



Bed Bug Control

Bed Bugs incidences have resurged in recent years & their spread is due to the high amount of international travel & a lack of awareness. Bedbugs are usually brought into buildings through our luggage, recycle furniture, boxes, clothing etc. Their flattened bodies allow them to conceal in the tiniest cracks & crevices around the room and within furniture. Faecal spots from these areas are signs of an infestation.

Bed Bugs prefer to harbour near to their next meal, places where we spend long hours like our beds & sofas. Unlike mosquitoes, both sexes' will suck blood, they may live more than a year & can go for months without a blood meal.

A single female lays about 2 eggs per day & will deposit their eggs at their resting places; Nymphs will hatch out between 1 to 2 weeks & will molt 5 times before becoming adults, and each nymph must have a blood meal to be able to molt to the next stage. They become sexually mature in about 5 weeks & the whole cycle will repeats itself.

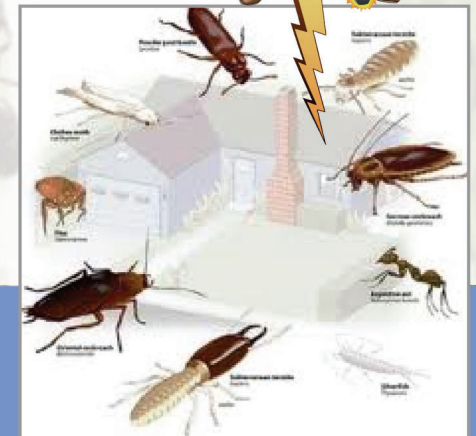
Hence, effective eradication may include the following combination of Chemical & Non chemical control such as Residual spray treatment, vacuuming, steam treatment & Laundering are essential in killing the adults & nymphs thus eliminating their breeding cycle. Our team will inspect & customize a control treatment depending on the extent of the infestation.

PEST CONTROL SERVICE



General Pest Control

Effective For - ants, rat, bed-bug, cockroaches, flies, mosquitoes, carpet-pests, flea, silverfish, spiders, wasps and other crawling insects.



Why General Pest Control With BPS?

- Well- trained operator
- Pesticide Chemical: high-performance, long-lasting insecticide Maxxthor: US products (www.ensystex.com.au) Target Gold/10E, Vectocide: Weltech HealthCare, Thailand

Mosquitoes Control

Mosquitoes are a vector agent that carries disease-causing viruses and parasites that cause dangerous diseases such as dengue, malaria, chikungunya and West Nile disease. For certain individuals, mosquito bites are more than itching or skin inflammation; their bites can lead to blisters, bruising and other skin reactions. Unfortunately, mosquitos are hard to suppress due to their remarkable ability to adapt to various environments and their reproductive biology.

Two steps of Mosquito management:

Source reduction

Pruning dense vegetation or cutting tall grasses within your compound where resting mosquitoes hide & clearing unused water bearing receptacles. Larvaciding program with ABATE SG & chemical to standing water where mosquitoes breed or are found thus killing the larvae before they develop into mature biting mosquitoes.

Biological control is a ecologically safe approach by using guppies or gumbusia fishes which is one of mosquito larvae's natural predators. Release these fishes, if you have Koi pond or water plants that you keep in large earthen jar.

Adult Mosquito Control

Some mosquito breeding sites are not always found, like in neighbouring homes, dense vegetation at your neighbour's compound which is not accessible or just impractical to treat. It is known that the Aedes mosquito is capable of flying about 200 meters when looking for a blood meal. Therefore, it may be necessary to take additional measures against the adult mosquitoes when the above methods don't show any improvement to your mosquito situation.

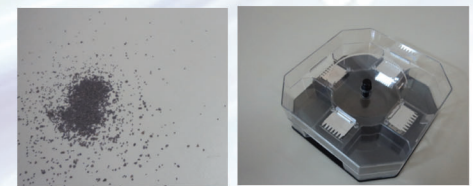
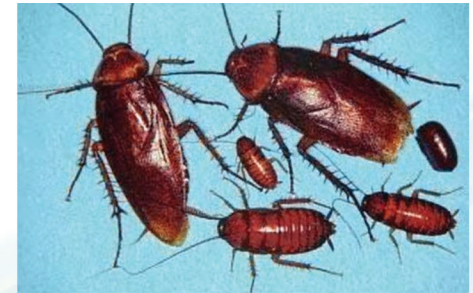
PestStop Management, do not use diesel in fogging as to minimize environmental contamination. We utilize water based fogging as it is more effective in mosquito control.



Cockroach Control

Cockroaches like to infest in warm, dark and humid environments. Cockroaches, or roaches, are omnivores and eat anything that is organic, including the excrement of humans and animals, which is why they are often associated with filth and unsanitary conditions.

Effective cockroach control and treatment methods include the application of insect residual sprays to cracks and crevices where cockroaches hide, and areas where they crawl in search of food. Baits can be applied to areas that cannot be sprayed, and can be made available in child or pet-proof containers. Good sanitation and proper housekeeping are also important to keep cockroaches out. Our team is experienced in dealing with these stubborn cockroach problems, and has helped many companies in cockroach control.



Housefly Control

Houseflies can be a nuisance and more critically, a vector agent that can transmit diseases such as cholera, salmonellosis, typhoid and dysentery by their dirty feeding habits.

Methods of house fly control include fly trap, fly glue boards, fogging and sprinkling fly bait. These methods of fly control, as provided by our pest management Singapore company, are shown in the photos below

